

IF YOUR ASSETS FAIL, YOUR BUSINESS FAILS

This is why your physical asset management should be a strategic imperative

Reliable availability of your physical assets allows you to predictably deliver safety, cost-savings, on-time production quality, and sustainability.

We are globally recognised as an asset management leader, playing a key role in defining and implementing global standards and best practices (ISO 55001, GFMAM).

Our world-class EAM system, On Key, help enterprises across the world cost-effectively manage physical assets across their entire life cycle.

We offer a fully wrapped, turnkey physical asset management service capability.

Contact us now and we'll help you close the gap between current and optimal asset performance.



MINE THE GAP

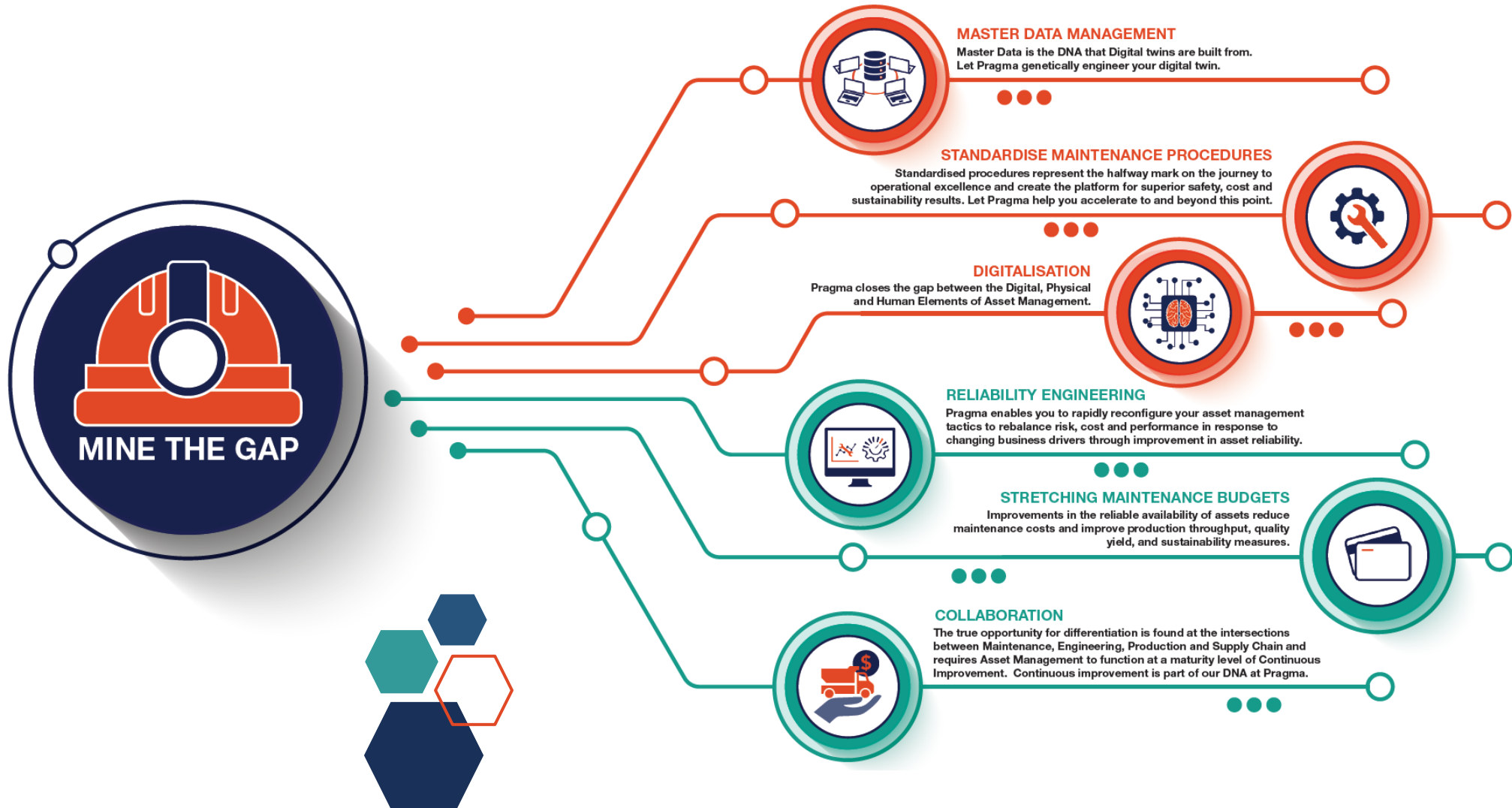
Optimising asset performance
increases profit

 **pragma**
asset management | engineered



MINING THE GAP

Explorative Areas to Consider



THE PRAGMA SMART MINE

Equipment Performance Excellence



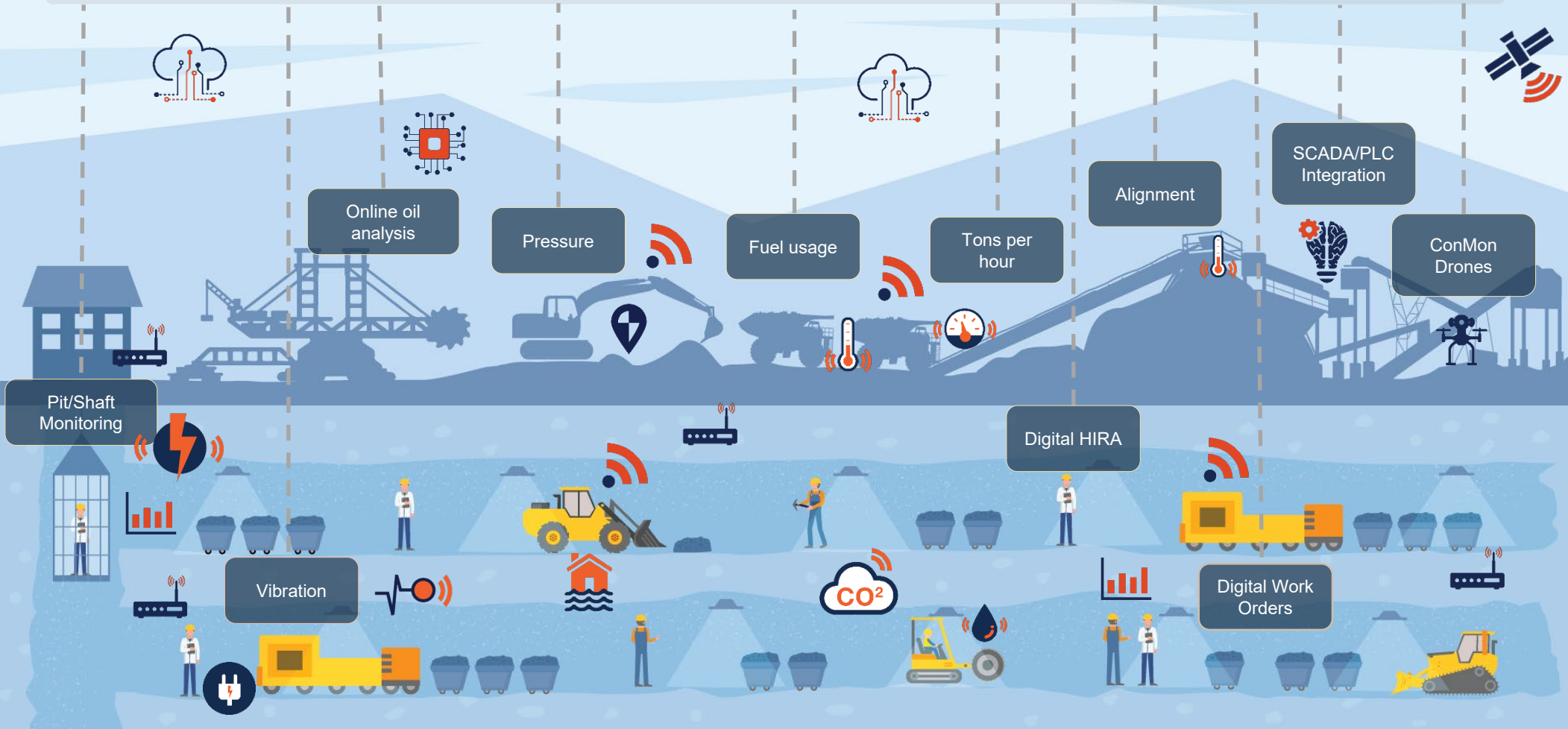
Improving Reliability and Driving Availability

Compliance to Standards (ISO 55K, 50K, 45K, 31K, 14K)

Digital Maintenance Controls

Intelligent Assets with Business Process Automation

Central Record of Asset Information



CONTACT US

Johan Alberts

 Johan.Alberts@pragmaworld.net

 +27 82 413 0449

